

Instructions for use

epT.I.P.S.<sup>®</sup>/ep Dualfilter T.I.P.S.<sup>®</sup> SealMax – EU IVD

English (EN)

1 Product description

The epT.I.P.S. and ep Dualfilter T.I.P.S. SealMax pipette tips are single-use pipette tips for aspirating and dispensing liquids with air cushion pipettes. The packing of the pipette tips is color-coded and corresponds to the color of the control button of the respective Eppendorf pipette.

The ep Dualfilter T.I.P.S. SealMax pipette tips are equipped with water-impermeable, two-phase filters. The filter protects the pipette from aerosols, liquid drops and splashes and prevents over-pipetting of liquids. If liquids with low water concentration and liquids with high salt concentration are used, the function of the filter is reduced.

2 Materials



**NOTICE! Aggressive substances may damage the pipette, pipette tip and accessories.**

- ▶ Check the resistance to chemicals before using organic solvents or aggressive chemicals.
- ▶ Only use liquids whose vapors do not attack the used materials.
- ▶ Observe the cleaning instructions.

Component	Material
Pipette tip	Polypropylene (PP)
Tray	Polypropylene (PP)
Box, lid	Polycarbonate (PC)
Box, lower part	Polycarbonate (PC)
Rack	Polypropylene (PP)

## 2 Instructions for use

epT.I.P.S.®/ep Dualfilter T.I.P.S.® SealMax – EU IVD  
English (EN)

### 3 Warnings for intended use



**WARNING! Damage to health due to toxic, radioactive or aggressive chemicals.**

- ▶ Wear your personal protective equipment.
- ▶ Observe the national regulations for handling these substances.
- ▶ Observe the material safety data sheets and manufacturer's application notes.



**NOTICE! Carry-over, contamination and incorrect dispensing results due to the incorrect use of pipette tips.**

The pipette tips are for single use only. Prolonged use can have a negative impact on dispensing tasks.

- ▶ Only use the pipette tips once.
- ▶ Do not use autoclaved ep Dualfilter T.I.P.S. for dispensing.

### 4 Intended use

The epT.I.P.S. and ep Dualfilter T.I.P.S. SealMax pipette tips are available in the packaging units Reloads, Box, Set, Singles and Racks and designed and constructed for low-contamination transfer of liquids, in particular for samples taken from the human body and for reagents within the scope of in vitro diagnostic applications to allow the in vitro diagnostic medical device to be used as intended. The epT.I.P.S. and ep Dualfilter T.I.P.S. SealMax pipette tips mentioned above are in vitro diagnostic medical devices in accordance with Directive 98/79/EC of the European Parliament and the Council of 27 October 1998. They are intended exclusively for single use and for application by qualified personnel only.

### 5 Operation

Observe the descriptions in the operating manual of the pipette used.





Use optically perfect and undamaged pipette tips only. If the packing is damaged, do not use the pipette tips.



Do not use ep Dualfilter T.I.P.S. SealMax without filter or with the filter inserted wrongly.

## 6 Autoclaving pipette tips

-  Do not use any additional disinfectants before autoclaving the boxes and reloads.
-  Remove the packaging foil of the box or the reloads before autoclaving.

Product	Temperature [°C]	Overpressure [bar]	Time [min]	Number of possible cycles
epT.I.P.S.	121	1	20	5
epT.I.P.S. Reload	121	1	20	5
epT.I.P.S. Box	121	1	20	100

-  The ep Dualfilter T.I.P.S. SealMax pipette tips are not autoclavable.

## 7 Technical data

### 7.1 Ambient conditions

Ambience	Only for use indoors.
Ambient temperature	5 °C – 40 °C
Relative humidity	10 % – 95 %, non-condensing.
Atmospheric pressure	79.5 kPa – 106 kPa



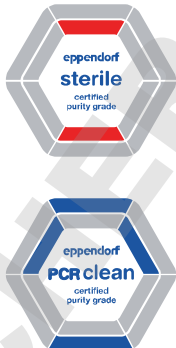

## 8 Transport, storage and disposal

### 8.1 Storage

	Air temperature	Relative humidity	Atmospheric pressure
In transport packaging	-25 °C – 55 °C	10 % – 95 %	70 kPa – 106 kPa
Without transport packaging	-5 °C – 45 °C	10 % – 95 %	70 kPa – 106 kPa

**4 Instructions for use**  
epT.I.P.S.®/ep Dualfilter T.I.P.S.® SealMax – EU IVD  
English (EN)

**9 Purity grades and certificates**  
**9.1 Eppendorf purity grades**

	Eppendorf Quality	PCR clean	Sterile + PCR clean	Biopur
				

**Batch testing (certified) for the following purity criteria**

Free of human DNA		■	■	■
DNA-free (free of human and bacterial DNA)				■
DNase-free		■	■	■
RNase-free		■	■	■
Free of PCR inhibitors		■	■	■
ATP-free				■
Pyrogen-free (endotoxin-free)			■	■
Sterile (Ph.Eur./UPS)			■	■

**epT.I.P.S.**

epT.I.P.S. Box + Set	■			
epT.I.P.S. Reloads	■	■		
epT.I.P.S. Racks				■
epT.I.P.S. Singles				■
ep Dualfilter T.I.P.S. SealMax			■	

## 9.2 Certificates

There are two different categories of certificates for Eppendorf Liquid Handling consumables:

Batch-specific certificates are prepared for the following purity grades:

- Biopur
- PCR clean
- PCR clean and Sterile

General certificates of conformity:

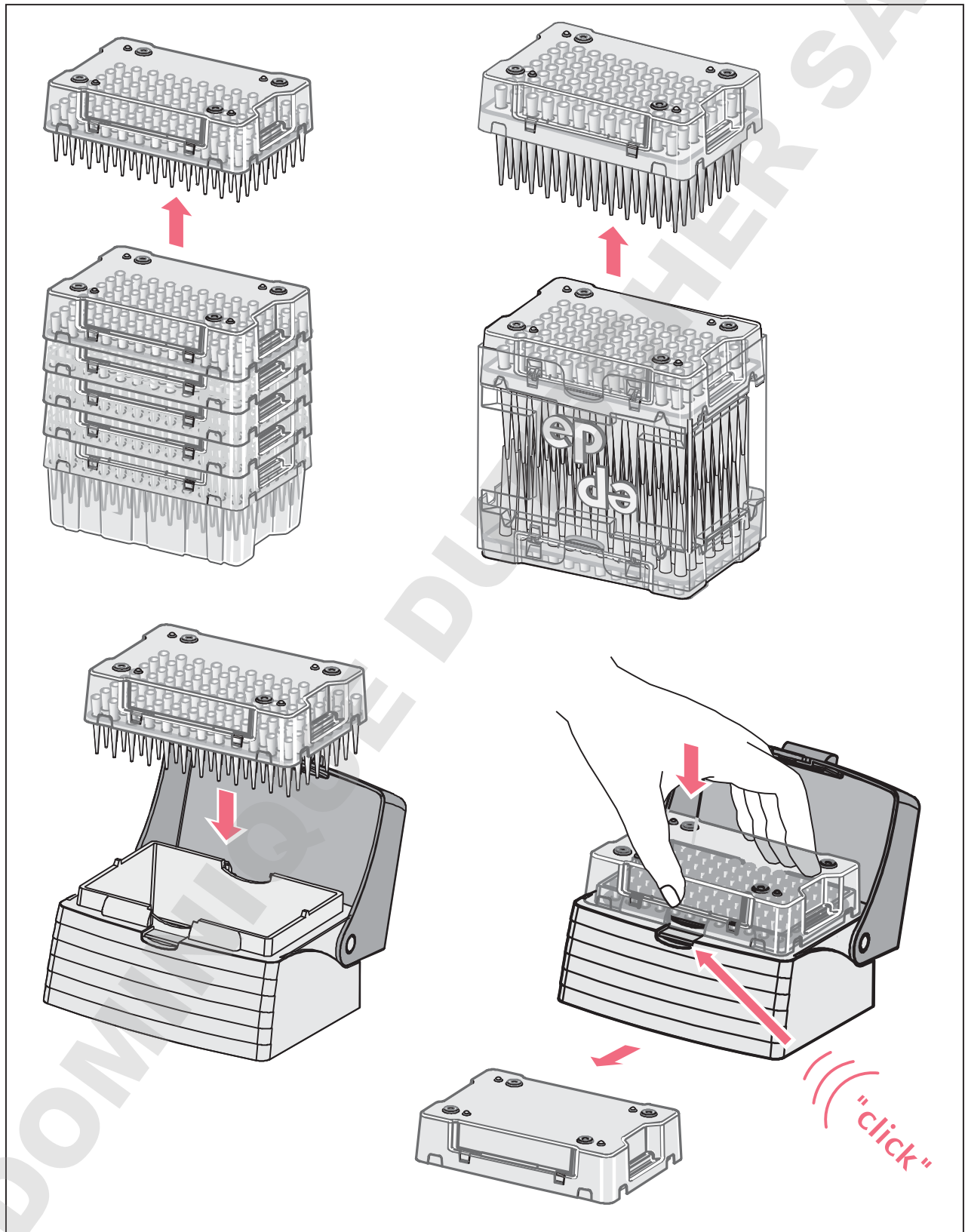
- Certificate of conformity for products with the purity grade PCR clean (Certificate of Purity – PCR clean).
- Certificate of conformity for products with the purity grade Biopur (Certificate of Quality/Conformity – Biopur).
- Certificate of conformity regarding trace metal (Certificate of Quality – epT.I.P.S. – Typical values for trace metal).
- Certificate of conformity regarding surface active additives (Certificate of Quality epT.I.P.S. and ep Dualfilter T.I.P.S. Quality Assurance).
- CE conformity (Certificate of EC Conformity Declaration – epT.I.P.S.).
- Certificate of conformity regarding the material composition and adherence to the error of measurement of pipette tips (Certificate of Quality/Conformity – epT.I.P.S. Dualfilter, LoRetention, SealMax).
- Certificate of conformity regarding the plastic granulates used (Certificate of Quality/Conformity – Laboratory Consumables).
- Certificate of conformity regarding the filters used (Certificate of Quality/Conformity – ep Dualfilter T.I.P.S. – EPA/HEPA).

All certificates can be downloaded from our website [www.eppendorf.com/certificates](http://www.eppendorf.com/certificates).

## Instructions for use

epT.I.P.S.®/ep Dualfilter T.I.P.S.® SealMax – EU IVD  
English (EN)

### 10 Handling reloads



Eppendorf AG  
Barkhausenweg 1  
22339 Hamburg  
Germany

Your local distributor: [www.eppendorf.com/contact](http://www.eppendorf.com/contact)  
[eppendorf@eppendorf.com](mailto:eppendorf@eppendorf.com) · [www.eppendorf.com](http://www.eppendorf.com)