

LACTOSE INTOLERANCE

quick test

BIOHIT HealthCare

Innovating for Health



Product specifications

- Sample: duodenal biopsy specimen
- Test principle: detection of lactase activity
- Test components: test plate, reagent bottles (3 pcs), instruction for use
- Storage: +2-8°C



Ordering details:

Cat. No.	Item
602010	25 tests/box
602012	10 tests/box
602018	Lactase control reagent

Biohit Oyj

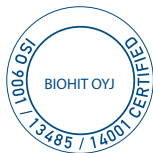
Laippatie 1
00880 Helsinki
Finland
Tel. +358 9 773 861
Fax +358 9 773 86 200
info@biohit.fi

Biohit HealthCare Srl

Via Boncompagni, 3
20139 Milano
Italy
Tel. +39 02 38238113
Fax +39 02 38236521
info.italy@biohit.fi

Biohit HealthCare Ltd.

Pioneer House, North Rd
Ellesmere Port, CH65 1AD,
United Kingdom
Tel. +44 151 550 4 550
Fax. +44 151 550 4 551
info@biohithealthcare.co.uk



In the USA for research use only.

References:

1. Jolanda F, Parodi F et al. Poster presentation at DDW 2009; S2067.
2. Kuokkanen M, Myllyniemi M et al. Endoscopy 2006; 38: 708-712.
3. Ojetti V, La Mura R et al. Dig Dis Sci. 2008; 53(6): 1589-92

www.biohithealthcare.com

BIOHIT HealthCare

Innovating for Health

490061EN 06/2014



20 min
FROM BIOPSY

LACTOSE INTOLERANCE

quick test

Confirmed results during gastroscopy

The Lactose Intolerance quick test detects all types of lactase deficiency from biopsy specimens. This gives added value to gastroscopies with minimum effort. The test is based on the normal lactase enzyme reaction and is therefore able to detect lactase deficiency as well as indicate the functionality of the enzyme. The Lactose intolerance quick test is not only a sensitive diagnostic tool, but it has also been found to be more accurate than lactose breath test in predicting clinical response to lactose-free diet¹.

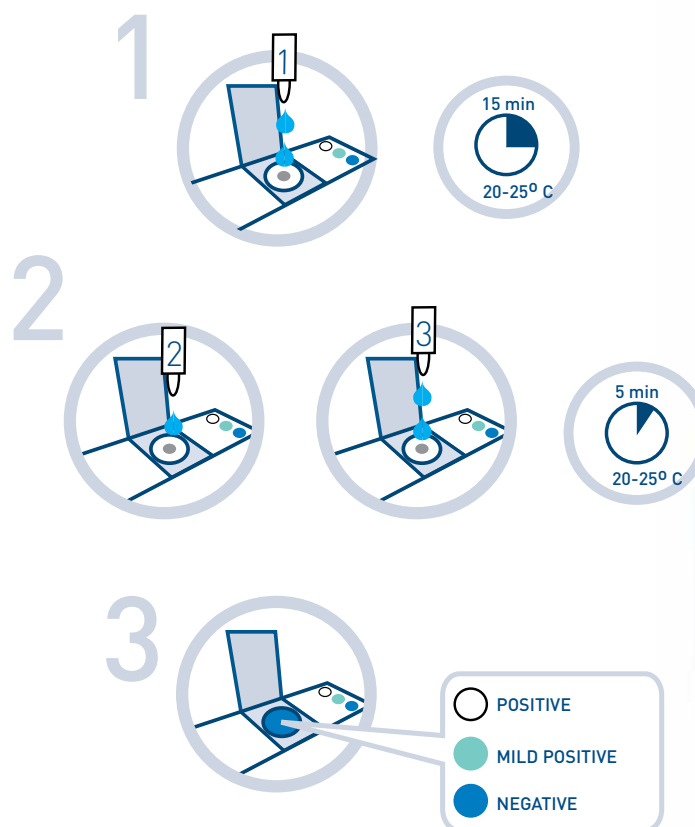
- Results in 20 minutes
- Simple color chart interpretation
- All reagents ready-to-use
- Sensitivity 95%, specificity 100%²
- Superior sensitivity compared to lactose breath test³

Easy testing from a duodenal biopsy specimen

The test procedure of the Lactose Intolerance quick test is fast and simple. The biopsy specimen is placed in the test plate and reagents are added to the sample. Results are available in just 20 minutes enabling testing and reporting during one visit.

Simple test procedure

1. Place biopsy into the well. Add two drops of **reagent 1**. Shake the plate.
2. Add one drop of **reagent 2** and two drops of **reagent 3**. Shake the plate.
3. Read the result against the color chart.



Results in
20 minutes

