

EUROMEDEX

CERTIFICATE OF ANALYSIS

Lambda DNA/HindIII Marker2, ready-to-use

#04-01213 250 (5x 50) µg
(for 500 applications)

Lot Exp. date:

Concentration: 0.1µg/µl
Supplied with 2x1ml 6X DNA Loading Dye
Solution

Store at room temperature (or at +4°C for
periods up to 6 months. For longer periods
store at -20°C).

In total 7 vials

Description

Lambda DNA/HindIII Marker, 2, is premixed
with a storage and loading buffer at a total DNA
concentration of 0.1µg/µl and can be directly
applied onto an agarose gel.

The DNA Marker contains the following 8
discrete fragments (in base pairs): 23130*,
9416, 6557, 4361*, 2322, 2027, 564, 125.

Storage and Loading Buffer

10mM Tris-HCl (pH 7.6), 10mM EDTA, 0.005%
bromophenol blue, 0.005% xylene cyanol FF
and 10% glycerol.

6X DNA Loading Dye Solution

10mM Tris-HCl (pH 7.6), 0.03% bromophenol
blue, 0.03% xylene cyanol FF, 60% glycerol
and 60mM EDTA.

Quality Control Assay Data

Analysis of 0.5µg (5µl) of the DNA Marker on agarose
gel by ethidium bromide staining generates 8 discrete
bands pattern.

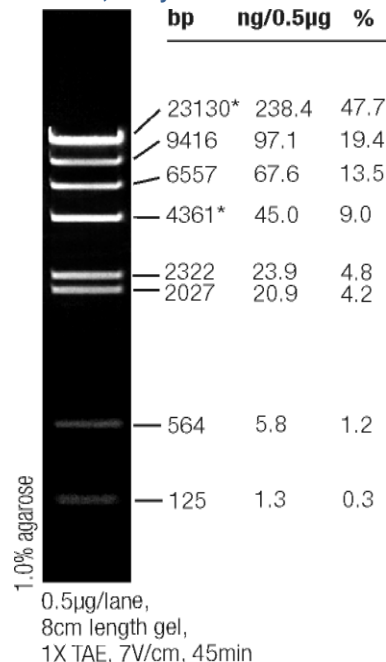
Recommendations for Use

- Vortex gently just prior to use and take 5µl of
the DNA Marker.
- Heat for 5min at 65°C and then cool on ice for
3min (see Note).
- Apply 5µl (0.5µg) of the DNA Marker on a
5mm lane of agarose gel.
- Following electrophoretic separation on gel,
visualize the DNA bands by ethidium bromide
staining.

Note

- One vial (50µg) is sufficient for ~100
applications.
- Use 0.1µg (1µl) of ready-to-use DNA Marker
per 1mm of agarose gel lane width.
- The cohesive ends of the 12nt cos site of
bacteriophage lambda from fragments of
23130bp and 4361bp (indicated*) may anneal
and form an additional band at 27491bp.
These fragments can be separated by
heating at 65°C for 5min and then cooling on
ice for 3min.

Lambda DNA/HindIII Marker 2, ready-to-use



Product Use Limitation.

This product is developed, designed and sold exclusively for research purposes and *in vitro* use only. The product was not tested for use in diagnostics or for drug development, nor is it suitable for administration to humans or animals.

EUROMEDEX

24, rue des Tuileries BP 684

F-67460 SOUFFELWEYERSHEIM CEDEX

Tél.: 03 88 18 07 22

Fax: 03 88 18 07 25

e-mail: research@euromedex.com

Internet: www.euromedex.com