

Accutase® Cell Detachment Solution

Catalog# / Size	423201 / 100 mL
Regulatory Status	RUO
Other Names	Accutase Cell Dissociation Reagent
Description	Accutase® is a cell detachment solution containing proteolytic and collagenolytic enzymes, which are neither mammalian nor bacterial derived. It is a replacement for Trypsin-EDTA solution and is useful for the detachment of cells from standard tissue culture plasticware and adhesion coated plasticware, and polymers. Accutase® works exceptionally well for detaching cell lines for continued cell culturing, analysis of cell surface markers, virus growth assays, quiescence assays by serum starvation, transformation assays by oncogene transfection, neural crest cell migration assays, cell proliferation, cell haptotaxis, and tumor cell migration assays. Cell lines tested for Accutase™ application include fibroblasts, keratinocytes, vascular endothelial cells, hepatocytes, vascular smooth muscle cells, hepatocyte progenitors, primary chick embryo neuronal cells, bone marrow stem cells, adherent CHO and HNK cells, macrophages, 293 cells, L929 cells, immortalized mouse testicular germ cells, MIC5, 3T3, Vero, COS, HeLa, NT2, MG63, M24 and A375 metastatic melanoma, gliomas U251, D54, HT1080 fibrosarcoma cells, HT29 colon cancer cells, Sf9 insect cells, human embryonic stem cells, human mesenchymal stem cells, and human neural stem cells.

Product Details

Formulation	Accutase® enzymes in Dulbecco's PBS containing 0.5 mM EDTA and phenol red.
Storage & Handling	This product is shipped with an ice pack. It may thaw during shipment. Upon receipt, store at -20°C. It can also be stored between 2°C and 8°C for up to 2 months.
Application	FC - Quality tested
Application Notes	<p>Recommended Protocol:</p> <ol style="list-style-type: none"> 1. Thaw Accutase® at 4°C or in a cool water bath (do not thaw at 37°C). 2. Aspirate the media and wash cells once with 1X Dulbecco's PBS (without calcium and magnesium). 3. Add an adequate volume of Accutase® Cell Detachment Solution to cover cells. 4. Allow cells to detach at room temperature or 37°C for 5 to 10 minutes, or until the cells are detached. 5. Strike the flask against palm of hand to detach cells. 6. Count cells and then resuspend in fresh medium to continue cell culture (in general, there is no neutralization step needed) or harvest the cells for other experimental needs.

Accutase is a registered trademark of Innovative Cell Technologies, Inc.

Product Citations

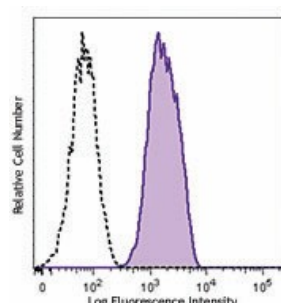
1. M Li, S Yang, D Xu 2016. J Biol Chem. 291: 24160 - 24171. [PubMed](#)
2. Poulos M, *et al.* 2016. Nat Commun. 7:13829. [PubMed](#)
3. Comba A, *et al.* 2020. J Vis Exp. . [PubMed](#)
4. Antón Z, *et al.* 2020. J Cell Sci. :133. [PubMed](#)
5. Kinoshita M, *et al.* 2020. Cell Stem Cell. . [PubMed](#)
6. Kerz M, *et al.* 2016. J Biomol Screen. 21: 887 - 896. [PubMed](#)

Antigen Details

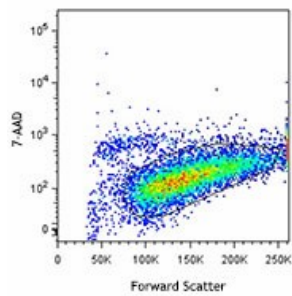
Antigen References	<ol style="list-style-type: none"> 1. Bajpai R, <i>et al.</i> 2008. <i>Mol. Reprod. Dev.</i> 75:818. 2. Yang D, <i>et al.</i> 2008. <i>Stem Cells</i> 26:55. 3. Brevig T, <i>et al.</i> 2006. <i>Artif. Organs.</i> 30:915.
---------------------------	--

Gene ID	NA
----------------	----

Product Data



Human umbilical vein endothelial cells, HUVEC, were detached with Accutase® Cell Detachment Solution (Cat. No. 423201) and stained with CD144 (VE-Cadherin) PE (filled histogram) or mouse IgG2a, κ PE isotype control (open histogram). Data was analyzed with 7-amino-actinomycin D (7-AAD) (Cat. No. 420404) live/dead cell discrimination.



For research use only. Not for diagnostic use. Not for resale. BioLegend will not be held responsible for patent infringement or other violations that may occur with the use of our products.

*These products may be covered by one or more Limited Use Label Licenses (see the BioLegend Catalog or our website, www.biolegend.com/ordering#license). BioLegend products may not be transferred to third parties, resold, modified for resale, or used to manufacture commercial products, reverse engineer functionally similar materials, or to provide a service to third parties without written approval of BioLegend. By use of these products you accept the terms and conditions of all applicable Limited Use Label Licenses. Unless otherwise indicated, these products are for research use only and are not intended for human or animal diagnostic, therapeutic or commercial use.

8999 BioLegend Way, San Diego, CA 92121 www.biolegend.com
Toll-Free Phone: 1-877-Bio-Legend (246-5343) Phone: (858) 768-5800 Fax: (877) 455-9587