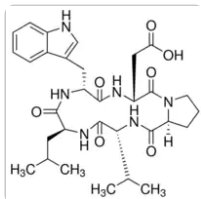


Type in Product Names, Product Numbers, or CAS Numbers to see suggestions.



[All Photos](#) (1)

#### Documents

[↓ SDS](#)

[🔍 COO/COA](#)

[📄 Specification Sheet](#)

[More Documents](#) »

**B150** ▶ **Sigma-Aldrich®**

## BQ-123

≥99%, sodium salt, lyophilized powder

#### Synonym(s):

BQ123, Cyclo(D-Trp-D-Asp-Pro-D-Val-Leu)

#### Empirical Formula (Hill Notation):

C<sub>31</sub>H<sub>41</sub>N<sub>6</sub>O<sub>7</sub> Na

CAS Number: **136553-81-6**

Molecular Weight: 632.68

MDL number: **MFCD00133204**

PubChem Substance ID: **24891595**

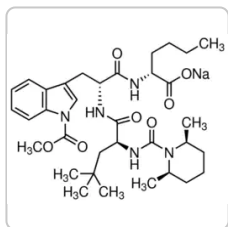
NACRES: NA.32

SKU	Pack Size	Availability	Price	Quantity	
B150-200UG	200 µG	✓ Only 5 left in stock (more on the way) <a href="#">Details...</a>	€154.00	<input type="text" value="-"/> <input type="text" value="+"/>	<a href="#">i</a>
B150-1MG	1 MG	✓ Only 1 left in stock (more on the way) <a href="#">Details...</a>	€413.00	<input type="text" value="-"/> <input type="text" value="+"/>	<a href="#">i</a>

[Request a Bulk Order](#)

[Add to Cart](#)

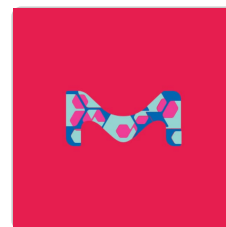
## RECOMMENDED PRODUCTS



Sigma-Aldrich

**B157****BQ-788**

≥95%, solid

[View Price and Availability](#)


Sigma-Aldrich

**E9780****Anti-Endothelin A Receptor antibody produced in rabbit**

affinity isolated antibody, buffered aqueous solution

[View Price and Availability](#)

## PROPERTIES

Quality Level	<b>200</b>
assay	≥99%
form	lyophilized powder
storage temp.	-20°C
SMILES string	<chem>[H][C@@]12CCCN1C(=O)[C@@H](CC(O)=O)NC(=O)[C@@H](Cc3c[nH]c4cccc34)NC(=O)[C@H](CC(C)C)NC(=O)[C@H](NC2=O)C(C)C</chem>
InChI	1S/C31H42N6O7/c1-16(2)12-21-27(40)33-22(13-18-15-32-20-9-6-5-8-19(18)20)28(41)35-23(14-25(38)39)31(44)37-11-7-10-24(37)29(42)36-26(17(3)4)30(43)34-21/h5-6,8-9,15-17,21-24,26,32H,7,10-14H2,1-4H3,(H,33,40)(H,34,43)(H,35,41)(H,36,42)(H,38,39)/t21-,22+,23+,24-,26+/m0/s1
InChI key	VYCMAAOURFJIHD-PJNXIOHISA-N

---

**Gene Information**

human ... [EDNRA\(1909\)](#) , [EDNRB\(1910\)](#)  
rat ... [Ednra\(24326\)](#) , [Ednrb\(50672\)](#)

---

Looking for similar products? Visit [Product Comparison Guide](#)

---

## DESCRIPTION

### Amino Acid Sequence

cyclo-Asp-Pro-Val-Leu-Trp

### Application

BQ-123 has been used as a selective endothelin-A receptor antagonist to study its effects on tumor necrosis factor  $\alpha$  (TNF $\alpha$ )-induced human airway smooth muscle cells (HASMCS) proliferation. It is also used as endothelin-A receptor antagonist to study its effects on TNF $\alpha$ -induced granulocyte-macrophage colony-stimulating factor (GM-CSF) expression.

### Biochem/physiol Actions

BQ-123 is an endothelin(Et) receptor antagonist and is exquisite for endothelin A (ETA) receptor. It is a cyclic pentapeptide.  
Selective ET<sub>A</sub> endothelin receptor antagonist.

---

## SAFETY INFORMATION

**Storage Class Code**

**WGK**

**Flash Point(F)**

**Flash Point(C)**

13 - Non Combustible Solids

WGK 3

Not applicable

Not applicable

**Personal Protective  
Equipment**

dust mask type N95 (US),

[Eyeshields](#), [Gloves](#)

## DOCUMENTATION

**Certificate of Analysis**

Enter Lot Number to search for Certificate of Analysis (COA).

Lot Number

e.g. 023J5431

**How to enter Lot Number (COA)****Search****Certificate of Origin**

Enter Lot Number to search for Certificate of Origin (COO).

Lot Number

e.g. 023J5431

**How to enter Lot Number (COO)**

[Search](#)

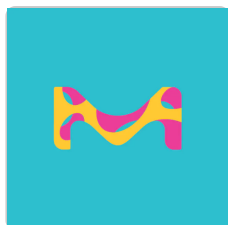
## Product Information Sheet

[Product Information Sheet - B150](#)

## More Documents

[Structure Search](#)[SDS](#)

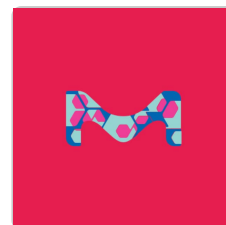
## CUSTOMERS ALSO VIEWED



USP

**1076115****Bosentan**

United States Pharmacopeia (USP) Reference Standard

[View Price and Availability](#)

Sigma-Aldrich

**SML0749****SC79**

≥97% (NMR)

[View Price and Availability](#)

## FREQUENTLY ASKED QUESTIONS

Which document(s) contains shelf-life or expiration date information for a given product?

If available for a given product, the recommended re-test date or the expiration date can be found on the Certificate of Analysis.

### **How do I get lot-specific information or a Certificate of Analysis?**

The lot specific COA document can be found by entering the lot number above under the "Documents" section.

### **How should Product B150, BQ-123, be dissolved?**

This product is soluble in water (0.25mg/ml), yielding a clear colorless solution.

### **Is Product B150 the free acid form of BQ-123, or is it a salt?**

Product No. B150 is BQ123 sodium salt.

### **How do I find price and availability?**

There are several ways to find pricing and availability for our products. Once you log onto our website, you will find the price and availability displayed on the product detail page. You can contact any of our Customer Sales and Service offices to receive a quote. USA customers: 1-800-325-3010 or view [local office numbers](#).

### **What is the Department of Transportation shipping information for this product?**

Transportation information can be found in Section 14 of the product's (M)SDS. To access the shipping information for this material, use the link on the product detail page for the product.

### **What is the solution stability for Product B150, BQ-123?**

We do not perform any solution stability studies on Product B150, BQ-123. The following reference indicates that the product is stable in solution for 24 hours but no temperature was mentioned. Cardillo, C. et al., Hypertension, 33, 753-758 (1999). The following abstract indicates that BQ-123 was used in an osmotic pump for a 2 week treatment. Bonvollet, S. et al., A.J.P. - Heart, 266 (4), H1327-H1331 (1994).

### **My question is not addressed here, how can I contact Technical Service for assistance?**

Ask a Scientist [here](#).

## PEER REVIEWED PAPERS

### **BQ-123, a peptidic endothelin ETA receptor antagonist, prevents the early cerebral vasospasm following subarachnoid hemorrhage after intracisternal but not intravenous injection.**

**M Clozel et al.**

*Life sciences, 52(9), 825-834 (1993-01-01)*

The aim of this study was to evaluate the role of endothelin and endothelin ETA receptor in the early cerebral vasoconstriction following subarachnoid hemorrhage (SAH) in the rat. SAH induced by injection of autologous blood in the cisterna magna reduced

---

### **TNFalpha-induced GM-CSF release from human airway smooth muscle cells depends on activation of an ET-1 autoregulatory positive feedback mechanism.**

**J Knobloch et al.**

*Thorax, 64(12), 1044-1052 (2009-10-24)*

There is an urgent need to inhibit endothelin-1 (ET-1) induced chronic inflammatory processes in early stages of lung diseases in order to prevent untreatable irreversible stages often accompanied by lung fibrosis and pulmonary hypertension. Nothing is known about the airway

---

### **Effect of endothelinA-receptor antagonist BQ-123 and phosphoramidon on cerebral vasospasm.**

**F Cosentino et al.**

*Journal of cardiovascular pharmacology, 22 Suppl 8, S332-S335 (1993-01-01)*

The present study was designed to determine whether an endothelinA (ETA)-receptor antagonist BQ-123 (cyclo[Dtrp, Dasp, pro-D-Val-Leu]) or an ET-converting enzyme inhibitor phosphoramidon may prevent development of cerebral vasospasm after subarachnoid hemorrhage (SAH). A "double hemorrhage" canine model of the disease

---

### **Mouse connective tissue mast cell proteases tryptase and carboxypeptidase A3 play protective roles in itch induced by endothelin-1.**

**Elín I Magnúsdóttir et al.**

*Journal of neuroinflammation, 17(1), 123-123 (2020-04-24)*

Itch is an unpleasant sensation that can be debilitating, especially if it is chronic and of non-histaminergic origin, as treatment options are limited. Endothelin-1 (ET-1) is a potent endogenous vasoconstrictor that also has the ability to induce a burning, non-histaminergic

## Reversal of established responses to endothelin-1 in vivo and in vitro by the endothelin receptor antagonists, BQ-123 and PD 145065.

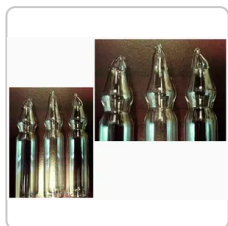
**T D Warner et al.**

*British journal of pharmacology, 112(1), 207-213 (1994-05-01)*

1. Endothelin-1 binds almost irreversibly to its receptors and causes prolonged vasoconstrictions. Here we have studied the reversal of established responses to ET-1 in vivo and in vitro by BQ-123, an ETA receptor-selective antagonist, and/or PD 145065, an ETA/ETB receptor

[View All Related Papers](#)

## RECENTLY VIEWED PRODUCTS



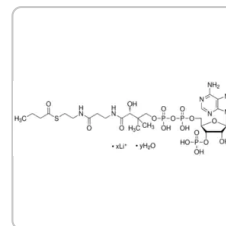
Sigma-Aldrich

**B1502**

**Brain Extract from bovine brain**

Type I, Folch Fraction I

[View Price and Availability](#)



Sigma-Aldrich

**B1508**

**Butyryl coenzyme A lithium salt hydrate**

≥90%

[View Price and Availability](#)

## TECHNICAL SERVICE

Our team of scientists has experience in all areas of research including Life Science, Material Science, Chemical Synthesis, Chromatography,



Analytical and many others.

[Contact Technical Service](#)

---

© 2022 Merck KGaA, Darmstadt, Germany and/or its affiliates. All Rights Reserved.

Reproduction of any materials from the site is strictly forbidden without permission.

[Site Use Terms](#) | [Privacy Policy](#) | [General Terms and Conditions of Sale](#) | [Copyright Consent](#) | [Cookies Settings](#)