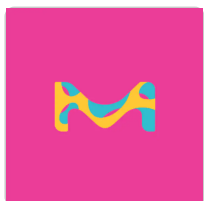


Type in Product Names, Product Numbers, or CAS Numbers to see suggestions.



[All Photos](#) (1)

#### Documents

[↓ SDS](#)

[🔍 COO/COA](#)

[📄 Specification Sheet](#)

[More Documents](#) »

**B1522**  **SAFC**

## Basal Medium Eagle

★★★★★ (0)



With Earle's salts and sodium bicarbonate, without L-glutamine, liquid, sterile-filtered, suitable for cell culture

Synonym(s):

BME

NACRES:

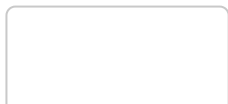
NA.75

SKU	Pack Size	Availability	Price	Quantity
B1522-500ML	500 ML	 Available to ship on October 10, 2022 <a href="#">Details...</a>	€34.30	<div><div>—</div><div>+</div><div></div></div>

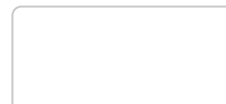
[Request a Bulk Order](#)

[Add to Cart](#)

## RECOMMENDED PRODUCTS



Sigma-Aldrich  
**B9638**



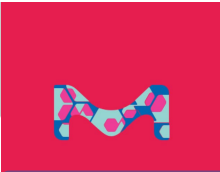
Sigma-Aldrich  
**M4655**



**Basal Medium Eagle**

With Earle's salts and L-glutamine, without sodium bicarbonate, powder, suitable for cell culture

[View Price and Availability](#)



**Minimum Essential Medium Eagle**

With Earle's salts, L-glutamine and sodium bicarbonate, liquid, sterile-filtered, suitable for cell culture

[View Price and Availability](#)



**PROPERTIES**

Quality Level	400
sterility	sterile-filtered
form	liquid
technique(s)	cell culture   mammalian: suitable
impurities	endotoxin, tested
components	L-glutamine: no Earle's salts (5% CO <sub>2</sub> ): yes NaHCO <sub>3</sub> : yes
shipped in	ambient
storage temp.	2-8°C

Looking for similar products? Visit [Product Comparison Guide](#)

## Related Categories

[Bioprocessing Cell Culture Media](#)

[Classical Media & Buffers](#)

---

## DESCRIPTION

### General description

Eagle's Basal Medium (BME) is one of the most used synthetic cell culture media. The tissue culture association recommends that the term "Eagle's Basal Medium" be used only to refer to the formula developed to support HeLa cells. BME has previously been used in monolayer culture studies to assess the growth response of normal (WI-38) and transformed (mouse and HeLa) cells. BME is the precursor of Dulbecco's Modified Eagle's medium (DME) and Eagle's Minimum Essential Medium (MEM).

### Application

Basal Medium Eagle has been used:

- as a component in the culture medium for cochlear organotypic cultures and salicylate treatment
- to maintain cerebellar granule neurons (CGNs) to determine if there is a system that regulates the distribution and/or group dynamics of axonal mitochondria
- in the preparation of cortical slices, serum-free medium, and slice culture medium for slice overlay assay to study the influence of extracellular signals on neuronal development

### Reconstitution

Supplement with 0.292 g/L L-glutamine.

## RELATED PRODUCTS

### Supplement

**G7513**

L-Glutamine solution, 200 mM, solution, sterile-filtered, BioXtra, suitable for cell culture

[View Pricing](#)

**F2442**

Fetal Bovine Serum, USA origin, sterile-filtered, suitable for cell culture, suitable for hybridoma

[View Pricing](#)

## SAFETY INFORMATION

Storage Class Code	WGK	Flash Point(F)	Flash Point(C)
12 - Non Combustible Liquids	WGK 1	Not applicable	Not applicable

## DOCUMENTATION

### Certificate of Analysis

Enter Lot Number to search for Certificate of Analysis (COA).

Lot Number

e.g. 023J5431

**How to enter Lot Number (COA)**

**Search**

## Certificate of Origin

Enter Lot Number to search for Certificate of Origin (COO).

Lot Number

e.g. 023J5431

**How to enter Lot Number (COO)**

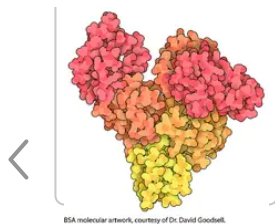
**Search**

## Formulation

**Basal Medium Eagle (BME) - B1522**

**SDS**

## CUSTOMERS ALSO VIEWED



Sigma-Aldrich

**A4919****Bovine Serum Albumin**

heat shock fraction, protease free, low endotoxin, suitable for cell culture, pH 7, ≥98%

[View Price and Availability](#)


Sigma-Aldrich

**M5550****MEM Amino Acids (50x) solution**

Without L-glutamine, liquid, sterile-filtered, BioReagent, suitable for cell culture

[View Price and Availability](#)

## PEER REVIEWED PAPERS

### Intermitochondrial signaling regulates the uniform distribution of stationary mitochondria in axons.

**Nozomu Matsumoto et al.**

*Molecular and cellular neurosciences*, 119, 103704-103704 (2022-02-09)

In the central nervous system (CNS), many neurons develop axonal arbors that are crucial for information processing. Previous studies have demonstrated that premature axons contain motile and stationary mitochondria, and their balance is important for axonal arborization. However, the mechanisms

### The slice overlay assay: a versatile tool to study the influence of extracellular signals on neuronal development.

**Franck Polleux et al.**

*Science's STKE : signal transduction knowledge environment*, 2002(136), p19-p19 (2002-06-13)

We have developed a technique that allows characterization and identification of extracellular signals that regulate various aspects of neuronal differentiation. In this in vitro assay, dissociated cells isolated from the developing cerebral wall are labeled and cultured over organotypic cortical

### Salicylate-induced degeneration of cochlea spiral ganglion neurons-apoptosis signaling.

**L Wei et al.**

*Neuroscience*, 168(1), 288-299 (2010-03-20)

Aspirin, whose active ingredient is sodium salicylate, is the most widely used drug worldwide, but it is not recommended for children because it may cause Reye's syndrome. High doses of salicylate also induce temporary hearing loss and tinnitus; while these

## Genome-Wide Chromatin Landscape Transitions Identify Novel Pathways in Early Commitment to Osteoblast Differentiation.

**Bethtrice Thompson et al.**

*PloS one*, 11(2), e0148619-e0148619 (2016-02-20)

Bone continuously undergoes remodeling by a tightly regulated process that involves osteoblast differentiation from Mesenchymal Stem Cells (MSC). However, commitment of MSC to osteoblastic lineage is a poorly understood process. Chromatin organization functions as a molecular gatekeeper of DNA functions.

---

## An immortalized microglial cell line (Mocha) derived from rat cochlea.

**G M Seigel et al.**

*Molecular and cellular neurosciences*, 85, 202-210 (2017-11-08)

Microglia are glial-immune cells that are essential for the function and survival of the central nervous system. Microglia not only protect neural tissues from immunological insults, but also play a critical role in neural development and repair. However, little is

---

[View All Related Papers](#)

---

## PROTOCOLS AND ARTICLES

### Articles

#### Cell Culture Protocol 5: Subculture of Suspension Cell Lines

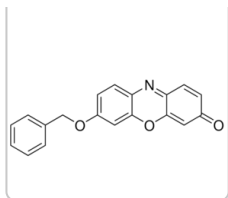
Cell culture protocol for passaging and splitting suspension cell lines

---

## RECENTLY VIEWED PRODUCTS

Sigma-Aldrich

Sigma-Aldrich

**B1532****Resorufin benzyl ether**

CYP450 substrate

[View Price and Availability](#)

H-Lys-Arg-Pro-Gly-Phe-Ser-Pro-Phe-OH

**B1542****[Lys-des-Arg<sup>9</sup>]-Bradykinin**

≥95% (HPLC)

[View Price and Availability](#)

## Reviews

[Be the first to review this product](#)

## Questions

[Be the first to ask a question](#)

## TECHNICAL SERVICE

Our team of scientists has experience in all areas of research including Life Science, Material Science, Chemical Synthesis, Chromatography, Analytical and many others.

[Contact Technical Service](#)

Did you find the content on this page helpful?\*



What can we do to improve this specific webpage on our website?

Submit

© 2022 Merck KGaA, Darmstadt, Germany and/or its affiliates. All Rights Reserved.

Reproduction of any materials from the site is strictly forbidden without permission.

[Site Use Terms](#) | [Privacy Policy](#) | [General Terms and Conditions of Sale](#) | [Copyright Consent](#) | [Cookies Settings](#)