

# CytoPhase™ Violet

<b>Catalog# / Size</b>	425701 / 200 µL
<b>Regulatory Status</b>	RUO
<b>Other Names</b>	live cell cycle
<b>Description</b>	CytoPhase™ Violet is a cell-permeant DNA-binding dye with the molecular weight of 560.96D and can be excited by either UV (355 nm or 375 nm) or violet laser (405 nm). Its emission maximum wavelength is about 440nm. It can be used for flow cytometric analysis of cell cycle in live or fixed cells. This dye can also be used for counterstaining the nuclei of cells in fluorescent microscopic imaging.

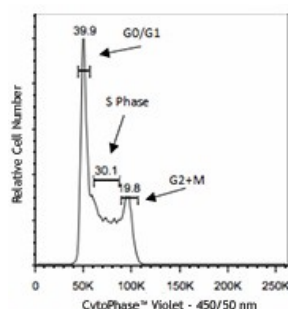
## Product Details

<b>Formulation</b>	5mM solution in H <sub>2</sub> O (200 µl/vial)
<b>Concentration</b>	5.0 mM
<b>Storage &amp; Handling</b>	Upon receipt, CytoPhase™ Violet should be stored at 4°C and protected from light.
<b>Application</b>	<a href="#">FC - Quality tested</a>
<b>Recommended Usage</b>	The recommended usage concentration for CytoPhase™ Violet is 5µM - 10µM.
<b>Application Notes</b>	<p>Prepare cells of interest in appropriate cell culture media at a concentration of 0.5-1x 10<sup>6</sup> cells /ml. Add CytoPhase™ Violet dye to the cell suspension to bring it to 5µM (1:1000)-10µM (1:500) working solution and incubate for 90 minutes at 37°C (CO<sub>2</sub> incubator). Optimal concentration might require titration of the dye based on differing cell types. Transfer cells to a FACS tube (cells do not require a wash step) and acquire samples on a flow cytometer equipped with a violet laser.</p> <p>CytoPhase™ Violet can be used concurrently with antibody staining procedures.</p>

## Antigen Details

<b>Distribution</b>	Nucleus, DNA.
<b>Biology Area</b>	Cell Biology, Cell Cycle/DNA Replication, Cell Proliferation and Viability
<b>Gene ID</b>	NA

## Product Data



Ramos cells treated with 5µM CytoPhase™ Violet dye for 90 minutes at 37°C. Cells were then acquired on a flow cytometer equipped with a 405 nm laser with a 450/50 bandpass filter.

For research use only. Not for diagnostic use. Not for resale. BioLegend will not be held responsible for patent infringement or other violations that may occur with the use of our products.

\*These products may be covered by one or more Limited Use Label Licenses (see the BioLegend Catalog or our website, [www.biolegend.com/ordering#license](http://www.biolegend.com/ordering#license)). BioLegend products may not be transferred to third parties, resold, modified for resale, or used to manufacture commercial products, reverse engineer functionally similar materials, or to provide a service to third parties without written approval of BioLegend. By use of these products you accept the terms and conditions of all applicable Limited Use Label Licenses. Unless otherwise indicated, these products are for research use only and are not intended for human or animal diagnostic, therapeutic or commercial use.

8999 BioLegend Way, San Diego, CA 92121 [www.biolegend.com](http://www.biolegend.com)  
 Toll-Free Phone: 1-877-Bio-Legend (246-5343) Phone: (858) 768-5800 Fax: (877) 455-9587

