

## Technical Data Sheet

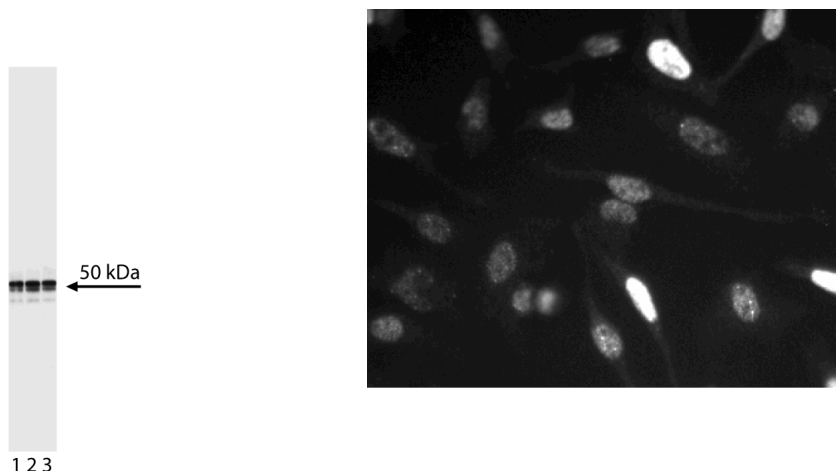
# Purified Mouse Anti-Human Cyclin E

### Product Information

<b>Material Number:</b>	<b>551159</b>
<b>Size:</b>	50 µg
<b>Reactivity:</b>	QC Testing: Human
<b>RRID:</b>	AB_394080
<b>Component:</b>	<b>51-1459GR</b>
<b>Description:</b>	Purified Mouse Anti-Human Cyclin E
<b>Size:</b>	50 µg (3 ea)
<b>Clone Name:</b>	HE12
<b>Isotype:</b>	Mouse IgG1
<b>Target MW:</b>	50 kDa
<b>Storage Buffer:</b>	Aqueous buffered solution containing BSA, glycerol, and ≤0.09% sodium azide.
<b>Component:</b>	<b>51-16516N</b>
<b>Description:</b>	HeLa Control Lysate
<b>Size:</b>	50 µg (1 ea)
<b>Concentration:</b>	1.0 mg/ml
<b>Storage Buffer:</b>	SDS-PAGE buffer (62mM Tris pH 6.8, 2% SDS, 0.9% b-mercaptoethanol, 0.003% bromophenol blue, 5% glycerol)

### Description

Cyclins and cyclin-dependent kinases (cdks) are evolutionarily conserved proteins that are essential for cell-cycle control in eukaryotes. Cyclins (regulatory subunits) bind to cdks (catalytic subunits) to form complexes that regulate the progression of the cell cycle. These complexes are regulated by activating and inhibitory phosphorylation events, as well as by interactions with small proteins that bind to cyclins, cdks, or cyclin-cdk complexes, e.g., p21 and p27 [Kip1]. Cyclin E is expressed in G1 and associates with cdk2 to form an active kinase where it plays an important role in the regulation of the G1/S restriction checkpoint in the cell cycle. Abberant expression of cyclin E has been reported to be associated with the oncogenic transformation of cells. This antibody has been reported not to cross-react with mouse cyclin E.



**Left Figure: Western blot analysis of Cyclin E expression on HeLa cell lysate.** Lysate from HeLa cells (ATCC CCL-2) was probed with Purified Mouse Anti-Human Cyclin E antibody (Cat. No. 551160/551159) at concentrations of 1.0 µg/mL (lane 1), 0.5 µg/mL (lane 2), and 0.25 µg/mL (lane 3). Cyclin E is identified as a band of 50 kDa.

**Right Figure: Immunofluorescent analysis of Cyclin E expression on HeLa cells.** HeLa cells were seeded in a 96-well imaging plate at ~10,000 cells per well. After overnight incubation, cells were stained using the alcohol perm protocol and Purified Mouse Anti-Human Cyclin E antibody. The second step reagent was Alexa Fluor® 555 goat anti-mouse IgG (Invitrogen). The image was taken on a BD Pathway™ 855 Bioimager system using a 20x objective. This antibody also stained A549 (ATCC CCL-185) and U-2 OS (ATCC HTB-96) cells and worked with both the Triton™ X-100 and alcohol perm protocols (see Recommended Assay Procedure).

### BD Biosciences

bdbiosciences.com  
United States Canada Europe Japan Asia Pacific Latin America/Caribbean  
877.232.8995 866.979.9408 32.2.400.98.95 0120.8555.90 65.6861.0633 55.11.5185.9995  
For country contact information, visit [bdbiosciences.com/contact](http://bdbiosciences.com/contact)

**Conditions:** The information disclosed herein is not to be construed as a recommendation to use the above product in violation of any patents. BD Biosciences will not be held responsible for patent infringement or other violations that may occur with the use of our products. Purchase does not include or carry any right to resell or transfer this product either as a stand-alone product or as a component of another product. Any use of this product other than the permitted use without the express written authorization of Becton, Dickinson and Company is strictly prohibited.

For Research Use Only. Not for use in diagnostic or therapeutic procedures. Not for resale.  
© 2017 BD. BD, the BD Logo and all other trademarks are property of Becton, Dickinson and Company.



## Preparation and Storage

Store undiluted at -20°C.

The monoclonal antibody was purified from tissue culture supernatant or ascites by affinity chromatography.

## Application Notes

### Application

Western blot	Routinely Tested
Bioimaging	Tested During Development
Flow cytometry	Reported

### Recommended Assay Procedure:

#### Bioimaging

- Seed the cells in appropriate culture medium at ~10,000 cells per well in a 96-well Imaging Plate and culture overnight.
- Remove the culture medium from the wells, and fix the cells by adding 100 µl of BD Cytifix™ Fixation Buffer (Cat. No. 554655) to each well. Incubate for 10 minutes at room temperature (RT).
- Remove the fixative from the wells, and permeabilize the cells using either BD Perm Buffer III or Triton™ X-100:
  - Add 100 µl of -20°C Perm Buffer III (Cat. No. 558050) to each well and incubate for 5 minutes at RT.OR
  - Add 100 µl of 0.1% Triton™ X-100 to each well and incubate for 5 minutes at RT.
- Remove the permeabilization buffer, and wash the wells twice with 100 µl of 1× PBS.
- Remove the PBS, and block the cells by adding 100 µl of BD Pharmingen™ Stain Buffer (FBS) (Cat. No. 554656) to each well. Incubate for 30 minutes at RT.
- Remove the blocking buffer and add 50 µl of the optimally titrated primary antibody (diluted in Stain Buffer) to each well, and incubate for 1 hour at RT.
- Remove the primary antibody, and wash the wells three times with 100 µl of 1× PBS.
- Remove the PBS, and add the second step reagent at its optimally titrated concentration in 50 µl to each well, and incubate in the dark for 1 hour at RT.
- Remove the second step reagent, and wash the wells three times with 100 µl of 1× PBS.
- Remove the PBS, and counter-stain the nuclei by adding 200 µl per well of 2 µg/ml Hoechst 33342 (e.g., Sigma-Aldrich Cat. No. B2261) in 1× PBS to each well at least 15 minutes before imaging.
- View and analyze the cells on an appropriate imaging instrument.

**Bioimaging:** For more detailed information please refer to "Cellular Imaging" at our website: <http://www.bdbiosciences.com/us/s/resources>

**Western blot:** For more detailed information please refer to "Cell biology (WB, IP, IHC, IF)" at our website:

<http://www.bdbiosciences.com/us/s/resources>

## Suggested Companion Products

Catalog Number	Name	Size	Clone
554656	Stain Buffer (FBS)	500 mL	(none)
554655	Fixation Buffer	100 mL	(none)
558050	Perm Buffer III	125 mL	(none)
554001	FITC Goat Anti-Mouse Ig	0.5 mg	Polyclonal
554002	HRP Goat Anti-Mouse Ig	1 mL	(none)
611449	HeLa Cell Lysate	500 µg	(none)

## Product Notices

- Since applications vary, each investigator should titrate the reagent to obtain optimal results.
- This antibody has been developed and certified for the bioimaging application. However, a routine bioimaging test is not performed on every lot. Researchers are encouraged to titrate the reagent for optimal performance.
- Triton is a trademark of the Dow Chemical Company.
- Source of all serum proteins is from USDA inspected abattoirs located in the United States.
- Caution: Sodium azide yields highly toxic hydrazoic acid under acidic conditions. Dilute azide compounds in running water before discarding to avoid accumulation of potentially explosive deposits in plumbing.
- Please refer to [www.bdbiosciences.com/us/s/resources](http://www.bdbiosciences.com/us/s/resources) for technical protocols.
- Please refer to <http://regdocs.bd.com> to access safety data sheets (SDS).

## References

Darzynkiewicz Z, Gong J, Juan G, Ardel B, Traganos F. Cytometry of cyclin proteins. *Cytometry*. 1996; 25(1):1-13. (Biology: Flow cytometry)  
Faha B, Harlow E, Lees E. The adenovirus E1A-associated kinase consists of cyclin E-p33cdk2 and cyclin A-p33cdk2. *J Virol*. 1993; 67(5):2456-2465. (Biology: Western blot)  
Gong J, Bhatia U, Traganos F, Darzynkiewicz Z. Expression of cyclins A, D2 and D3 in individual normal mitogen stimulated lymphocytes and in MOLT-4 leukemic cells analyzed by multiparameter flow cytometry. *Leukemia*. 1995; 9(5):893-899. (Biology: Flow cytometry)  
Gong J, Li X, Traganos F, and Darzynkiewicz Z. Expression of G1 and G2 cyclins measured in individual cells by multiparameter flow cytometry: a new tool in the analysis of the cell cycle. *Cell Prolif*. 1994; 27:357-371. (Biology: Flow cytometry)

Gong J, Traganos F, and Darzynkiewicz Z. Expression of cyclins B and E in individual MOLT-4 cells and in stimulated human lymphocytes during progression through the cell cycle. *Int J Oncol.* 1993; 3:1037-1042. (Biology: Flow cytometry)

Gong J, Traganos F, Darzynkiewicz Z. Threshold expression of cyclin E but not D type cyclins characterizes normal and tumour cells entering S phase. *Cell Prolif.* 1995; 28(6):337-346. (Biology: Flow cytometry)

Gong J, Traganos F, Darzynkiewicz Z. Simultaneous analysis of cell cycle kinetics at two different DNA ploidy levels based on DNA content and cyclin B measurements. *Cancer Res.* 1993; 53(21):5096-5099. (Biology: Flow cytometry)

Gorospe M, Liu Y, Xu Q, Chrest FJ, Holbrook NJ. Inhibition of G1 cyclin-dependent kinase activity during growth arrest of human breast carcinoma cells by prostaglandin A2. *Mol Cell Biol.* 1996; 16(3):762-770. (Biology: Western blot)

Keyomarsi K, O'Leary N, Molnar G, Lees E, Fingert HJ, Pardee AB. Cyclin E, a potential prognostic marker for breast cancer. *Cancer Res.* 1994; 54(2):380-385. (Biology: Western blot)

Scuderi R, Palucka KA, Pokrovskaja K, Bjorkholm M, Wiman KG, Pisa P. Cyclin E overexpression in relapsed adult acute lymphoblastic leukemias of B-cell lineage. *Blood.* 1996; 87(8):3360-3367. (Biology: Western blot)

Sherr CJ. Mammalian G1 cyclins. *Cell.* 1993; 73(6):1059-1065. (Biology)