

Active Recombinant Human HTRA2 Protein

Catalog No.: RP00041 **Recombinant**

Sequence Information

Species	Gene ID	Swiss Prot
Human	27429	O43464

Tags

No tag

Synonyms

HTRA2;MGCA8;OMI;PARK13;PRSS25;
OMI; PARK13; PRSS25

Product Information

Source	Purification
<i>E. coli</i>	> 92% by SDS-PAGE.

Endotoxin

Please contact us for more information.

Formulation

Lyophilized from a 0.22 µm filtered solution of 20mM Tris, 150mM NaCl, pH 8.0. Contact us for customized product form or formulation.

Reconstitution

Centrifuge the vial before opening. Reconstitute to a concentration of 0.1-0.5 mg/mL in sterile distilled water. Avoid vortex or vigorously pipetting the protein. For long term storage, it is recommended to add a carrier protein or stabilizer (e.g. 0.1% BSA, 5% HSA, 10% FBS or 5% Trehalose), and aliquot the reconstituted protein solution to minimize freeze-thaw cycles.

Background

The protein is a serine protease. It has been localized in the endoplasmic reticulum and interacts with an alternatively spliced form of mitogen-activated protein kinase 14. The protein has also been localized to the mitochondria with release to the cytosol following apoptotic stimulus. The protein is thought to induce apoptosis by binding the apoptosis inhibitory protein baculoviral IAP repeat-containing 4. Nuclear localization of this protein has also been observed.

Basic Information

Description

Active Recombinant Human HTRA2 Protein is produced by *E. coli* expression system. The target protein is expressed with sequence (Ala134-Glu458) of human HTRA2/Omi (Accession #NP_037379.1).

Bio-Activity

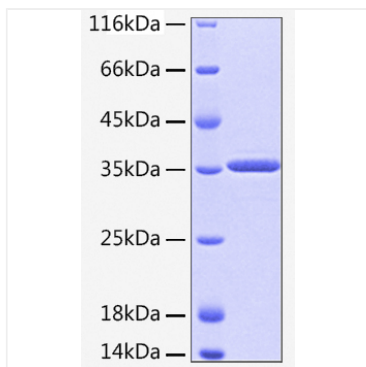
Protease activity demonstrated by HtrA2 cleavage of bovine β-casein (Sigma, Catalog # C-6905). Incubation of β-casein at 0.2 mg/mL with Recombinant Human HTRA-2 at 0.02 mg/mL (ratio of 10:1) for 60 minutes at 45°C in 50 mM Tris, pH 8.0, which results in >95% cleavage of β-casein, as revealed by SDS-PAGE.

Storage

Store the lyophilized protein at -20°C to -80 °C for long term. After reconstitution, the protein solution is stable at -20 °C for 3 months, at 2-8 °C for up to 1 week. Avoid repeated freeze/thaw cycles.

Contact

Validation Data



Recombinant Human HTRA2 Protein was determined by SDS-PAGE with Coomassie Blue, showing a band at 35 kDa.