

# Active Recombinant Human LYPD3 Protein

Catalog No.: RP01190 **Recombinant**

## Sequence Information

Species	Gene ID	Swiss Prot
Human	27076	O95274

### Tags

C-His

### Synonyms

LYPD3;C4.4A

## Product Information

Source	Purification
HEK293 cells	> 97% by SDS-PAGE.

### Endotoxin

< 0.1 EU/μg of the protein by LAL method.

### Formulation

Lyophilized from a 0.22 μm filtered solution of PBS, pH 7.4. Contact us for customized product form or formulation.

### Reconstitution

Centrifuge the vial before opening. Reconstitute to a concentration of 0.1-0.5 mg/mL in sterile distilled water. Avoid vortex or vigorously pipetting the protein. For long term storage, it is recommended to add a carrier protein or stabilizer (e.g. 0.1% BSA, 5% HSA, 10% FBS or 5% Trehalose), and aliquot the reconstituted protein solution to minimize freeze-thaw cycles.

## Background

## Basic Information

### Description

Active Recombinant Human LYPD3 Protein is produced by HEK293 cells expression system. The target protein is expressed with sequence (Leu31-His286) of human LYPD3/C4.4A (Accession #NP\_055215.2.) fused with a 6×His tag at the C-terminus.

### Bio-Activity

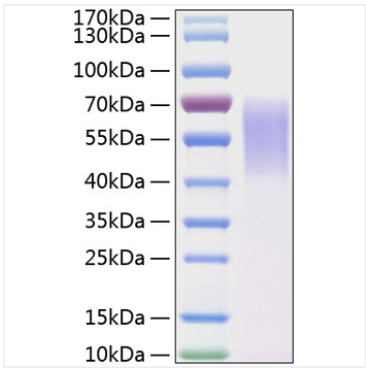
Measured by its binding ability in a functional ELISA. Immobilized Human LYPD3 Protein at 1 μg/mL (100 μL/well) can bind LYPD3 Rabbit pAb with a linear range of 0.06-3.84 ng/mL.

### Storage

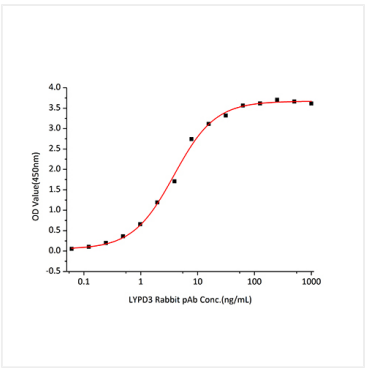
Store the lyophilized protein at -20°C to -80 °C for long term. After reconstitution, the protein solution is stable at -20 °C for 3 months, at 2-8 °C for up to 1 week. Avoid repeated freeze/thaw cycles.

## Contact

# Validation Data



Recombinant Human LYPD3 Protein was determined by SDS-PAGE with Coomassie Blue, showing a band at 45-68 kDa.



Immobilized Human LYPD3 Protein at 1µg/mL (100 µL/well) can bind LYPD3 Rabbit pAb with a linear range of 0.06-3.84 ng/mL.